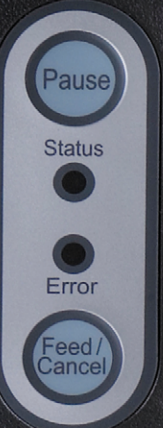




High-performance, High-reliability  
BIXOLON Thermal Transfer Label Printer  
**SLP-T400**

**BIXOLON Label Printer SLP-T400 integrates easily into a variety of printing applications including:**

- Warehousing  
- Inventory control, Asset management
- Transfer / Distribution  
- Outer box, Shipping, Delivery, Pallet
- Healthcare specimen labeling and patient tracking
- Retail product marking, Shelf labelling, Coupon and Receipt printing
- Transportation / Logistics
- Ticketing – Events entry tickets
- General industry & Manufacturing labeling requirements



**All in One Interface**

- Serial, Parallel and USB all in one
- Optional Ethernet (10/100 base T) and Bluetooth interface cards
- Bi-direction communication with a Parallel interface
- Firmware download fully supported with Serial, Parallel and USB

**SPECIFICATION FOR THE SLP-T400**

<b>Printing Method</b>	Direct Thermal Printing / Thermal Transfer Printing	<b>Emulation</b>	SLCS, EPL II, ZPL II, ESC-POS, DPL, Optional CPL
<b>Resolution</b>	203dpi(8dot/mm), Optional 300dpi(SLP-T403)	<b>Driver</b>	Win 95/98/ME/2000/NT/XP/2003 Server/VISTA
<b>Printing Speed</b>	150mm / sec (6 IPS)	<b>Interface</b>	Serial/Parallel/USB : Standard Ethernet (Internal or External) & Bluetooth→Optional
<b>Printing Width</b>	104mm	<b>Text Printing</b>	Multiply, Bold, Reverse and Rotation Functions
<b>Printing Length</b>	6 ~ 1,000mm(39.4")	<b>Block Printing</b>	Line, Box, Slope printing supported Overwrite, Exclusive or Delete mode supported
<b>Character</b>	Alphanumeric Character : 95 Extended Character : 128 X 22 pages International Character : 32 Resident Bitmap Fonts : 10	<b>Graphic</b>	PCX, BMP
<b>Paper</b>	<b>Types</b> Die-cut, Fan-Fold, Roll-Fed, Linerless, Continuous <b>Width</b> 25-118mm(1-4.6") <b>ID</b> 25.4-38.1mm(1-1.5"), <b>OD</b> Max ϕ 130mm(5.1"), Max ϕ 220mm(External)	<b>Template</b>	The label format can be stored in the printer & can be reused Variable, Counter can be used in template.
<b>Ribbon</b>	<b>Types</b> Wax, Wax/Resin, Resin -----> Outside Type <b>Width</b> 33-110mm(1.3-4.3") <b>Length</b> Max 300m <b>Core ID</b> 12.5mm, 25.4mm	<b>Receive Buffer</b>	256 Kbytes
<b>Sensor</b>	Transmissive sensor, Reflective sensor (Position adjustable), Ribbon-End, Head-Up sensor	<b>NV Image</b>	64 Kbytes
<b>Bar Codes</b>	1D : EAN-8, EAN-13, Code 39, Code 93, Code 128, 2D : PDF417, QR code, Maxi code, Data Matrix	<b>Power Supply</b>	Input AC : 100-240V / 50-60Hz, 1.5A Output DC : 24V, 3.75A
		<b>Operating</b>	Temperature : 0-45°C
		<b>Safety</b>	UL, CSA, TUV
		<b>EMC</b>	FCC Class A, CE Marking
		<b>Dimensions</b>	214(W) X 310(L) X 200(H) mm
		<b>Weight</b>	Approximately 5.7kg(Set 2.0kg)
		<b>Option</b>	RFID, Auto Cutter, Nice Label Design Program

**BIXOLON Headquarters**  
Address #A-5F, Digital Empire Building, 980-3, Yeongtong-dong, Yeongtong-gu,  
Suwon-si, Gyeonggi-do, 443-813, Korea  
Tel +82 (0) 31 218 5500 Fax +82 (0) 31 218 5583 E-mail sales@samsungminiprinters.com

**BIXOLON America Inc.**  
Address 1210 E. 223rd street Suite #330 Carson, CA 90745  
Tel +1 858 764 4580 Fax +1 310 522 3319 E-mail sales@samsungminiprinter.com

**BIXOLON Europe GmbH**  
Address Tiefenbroicher Weg 35, 40472 Düsseldorf  
Tel +49 (0) 211 68 78 54 0 Fax +49 (0) 211 68 78 54 20 E-mail sales@bixolon.de

**BIXOLON UK Branch**  
Address 8 Westfield Farm Askham Lane York YO24 3HU  
Tel +44 (0) 1904 786178 Fax +44 (0) 1904 788873 E-mail m.leary@bixolon.de

**OPTIONS**

**AUTO-CUTTER**

Labels are cut automatically off the roll, making the job easier and more efficient with optional auto-cutter (SLP-T400C/SLP-T403C)



**RFID**

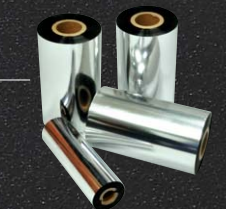
Use BIXOLON SLP-T400 to create radio frequency identification (RFID) labels on demand for a variety of operations

- Frequency: 865 ~ 955MHz
- Transmit Power: 1W
- Modulation: ASK
- Air Protocol: GEN2
- Type: FHSS



**RIBBON**

BIXOLON supports a spare ribbon that helps your customer maintain and extend expensive print head life



**COLOR**

BIXOLON provides two colors, Ivory and Dark gray and the user can select it to adjust with their other systems



**Optional value-added features**

- Short label (minimal height of label up to 5mm) printing supported
- Smart detection of empty label (Detect empty label and leap over to next label automatically)
- Linerless printing
- Peeler and Dispenser (Optional)
- Full version of Label design program (Optional)

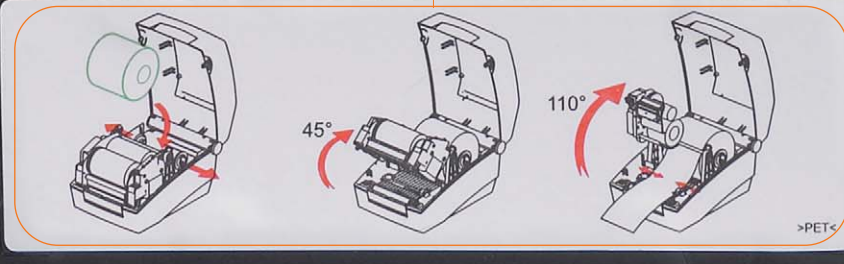


**All you need in one package!**

- SLP-T400 or SLP-T400C
- An AC adapter with the power code
- A roll of ribbon and label paper (sticker type) to get started printing right away
- A cleaning pen for the thermal print head
- A user's manual
- An installation CD including the drivers, all software programs, test samples and the user's guide book

Using centralized printing alignment, media is variable from 1" (25mm) to 4.6" (118mm) width providing flexibility for a wide range of applications and the SLP-T400 is easily used with various ribbon length from 74m to 300m without any other hardware changes. The SLP-T400's ease of operation delivers optimal performance at a competitive cost.

**User-convenience design**  
Easily and safely change the pager and ribbon



**MAIN FEATURES FOR THE SLP-T400**

**Advanced Firmware**

Design to meet the most popular programming languages (6 different languages), BIXOLON takes the lead offering a new generation of thermal transfer label printer SLP-T400. The standard 4MB flash memory allows many formats and graphics to be stored in the printer. The system supports resident typographic fonts, international character sets, block printing, all popular barcode sets and 2-D symbology such as Maxi code, PDF 417, QR code and even Data Matrix

**6 different Emulations (Programming Languages)**

- 5 built-in languages (SLCS, EPL II, ZPL II, ESC/POS, DPL)
- Optional language download (CPL)

**22 code pages supported**

- Unified label printer utility program helps you select any of them as standard
- CP 437(U.S.A), CP 850(Latin 1), CP 852(Latin 2), CP 860(Portuguese), CP 863(Canadian French), CP 865(Nordic), WCP 1252(Latin 1), CP 865-WCP 1252(European Combined), CP 857(Turkish), CP 737(Greek), WCP 1250(Latin 2), WCP 1253 (Greek), WCP 1254(Turkish), CP 855(Cyrillic), CP 862(Hebrew), CP 866(Cyrillic), WCP 1251(Cyrillic), WCP 1255(Hebrew), CP 928(Greek), CP 864(Arabic), CP 775(Baltic), WCP 1257(Baltic), 858 (Latin I + Euro)

**Powerful Template Function**

- The label format can be stored in the printer and can be reused
- Bar code : 1D and 2D (Maxi code, PDF 417, QR Code, Data Matrix)
- Text printing : Multiply, Bold, Reverse and Rotation functions
- Block printing : Line, Box, Slope printing supported
- Overwrite, Exclusive or Delete mode supported
- Graphic : PCX, BMP
- Variable and Counter functions are available



Example of Bar Code, Text, Block, and Graphic

**Sheriff protection logic**

- After firmware download, printer checks the installed font version and print warning message if font and firmware mismatch for best performance

**Clear Media Cover**

Clear window in the top cover allows media usage status to be monitored

**Enhanced Hardware Features**

The SLP-T400 Features an advanced controller board, triple (Serial, Parallel, USB) all in one, and rugged, compact design. A 32-bit microprocessor and 32Mbit SDRAM provides printing performance up to 6 inches per second.

**Media Handling**

The SLP-T400 accommodates a maximum 5.1 inches (Max. Ø 130mm) OD media roll using centralized printing alignment and this user-friendly design ensures proper loading and correct alignment for a variety of different media types

- Media Width : 25-118mm (1-4.6")
- Core Diameter : 25.4 ~ 38.1mm (1-1.5")
- Max Roll Diameter : 130mm (5.1")
- Media Type : Roll-fed or Fan-fold, Die-cut or Continuous and optional Linerless

- Media Sensor : Moveable Media (Gap) sensor, (Transmissive & Reflective sensor), Head-up sensor, Ribbon-end sensor, Black Mark (down / up - Optional)

**Wider range of Ribbon Capacity**

The Thermal Transfer Label Printer SLP-T400 incorporates the ribbon mechanism and it facilitates ribbon loading by providing easy access to the mechanism.

- Ribbon Width : 33 ~ 110mm (1.3-4.3")
- Core Diameter : 12.5mm, 25.4mm
- Ribbon Length : 74-300m
- Ribbon Type : Wax, Wax/Resin, Resin

Simple to operate  
One touch ribbon take-up gear

Moveable Media Sensor (Transmissive & Reflective Sensor)

Easy-to recognize status indicator

**SLP-T400 HIGHLIGHTS**

- **Enhanced Hardware provided**
  - Faster printing speed (6 inches per second, 150mm/sec)
  - High resolution (300 dpi optional) of printing (SLP-T403)
  - Wide range of ribbon rolls length from 74m to 300m
  - All in one interface card (Serial, Parallel, USB)
  - Internal/External Ethernet, Bluetooth interface card (Optional)

- **Advanced Firmware included**
  - 6 different languages supported (Programming languages) SLCS, EPL II, ZPL II, ESC/POS, DPL, Optional CPL
  - The label format can be stored in the printer and can be reused
  - 2D barcode (Maxi code, PDF 417, QR Code, Data Matrix)
  - Block printing (Line, Box, and Slope etc.)
  - 22 Code pages supported (included in the standard firmware)

- **Customer Oriented Software tools**
  - Device Font
  - Command Programming
  - User-defined Paper Size
  - Compatible Nice Label Program
  - Zoom Driver from A4 or Letter size to 4 inch size
  - True Type Font Download Tool
  - Unified Label Printer Utility

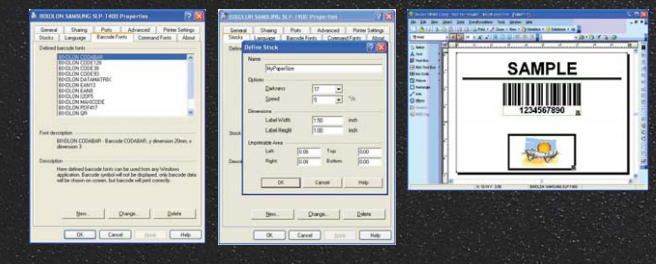
**MAIN FEATURES FOR THE SLP-T400**

**Customer Oriented Software Tools**

The SLP-T400 is supported by a rich pool of utility software. The powerful Windows driver, Nice Label program, Zoom driver, True type font download tool, Unified label printer utility program are available with more software being added in the future. These new customer oriented utilities enable the users to directly design the label, update the firmware and adjust the other printer settings more easily and with no hardware setting changes.

**Full featured windows driver**

- Device font supported
  - Faster printing speed with default font (10 kinds of English fonts and 5 kinds of Korean fonts)
- Various barcodes
  - 1D : EAN-8, EAN-13, Code 39, Code 93, Code 128, I, 2 of 5, ITF, Code bar, UPC-A, UPC-E
  - 2D : PDF417, QR code, Maxi code, Data Matrix
- User-defined command font
  - The user can make their own command font
- Paper setting, barcode fonts, command fonts
- Nice label program compatible



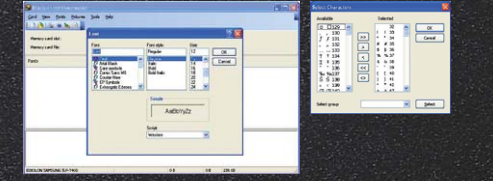
**Zoom out printing from A4 and letter size document**

- Z-Driver transmits A4 and Letter size document to the printer in 4inch format
- Simple and easy use in place of the conventional printers such as laser printers
- Ex) A laser printer which is being used in a kiosk application to printer web pages for customers → Now any one of these small and more cost effective printer can take its place

- The application that is printing the document (A4 or Letter size) need not be changed in any way
- No margins are required for printing

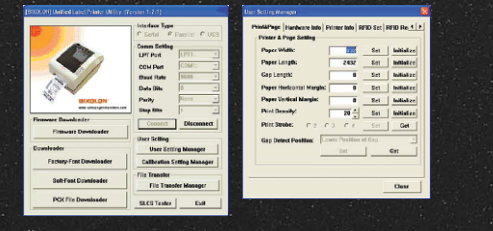
**True type font download tool**

- The user can download the true type font from windows into the printer
- The character of the font that will be downloaded can be added or deleted.



**Unified label printer utility program**

- Firmware Downloader
- Factory Font Downloader
- Soft Font Downloader
- PCX File Downloader
- User Setting Manager (Virtual Memory Setting)
  - Printer and Page setting
  - Hardware Information
  - Printer Information
  - RFID setting and Test
- Manual Calibration Setting Manager
- File Transfer Manager
- SLCS\* Tester



\* SLCS : BIXOLON SAMSUNG Language Command